

Ryan Corner & Hawkesdale Wind Farms

**Ryan Corner Development Pty
Ltd
Hawkesdale Asset Pty Ltd**

December 2020 Newsletter

Phone: 0400 403 282

E-mail: info@globalpower-generation.com.au

Website: <http://globalpower-generation.com.au/>

Mail: Ryan Corner Development Pty Ltd / Hawkesdale Asset
Pty Ltd, Suite 4, Level 3, 24 Marcus Clarke Street, Canberra
ACT 2600

Ryan Corner Wind Farm

Moving ahead with this project

Global Power Generation Australia (GPG Australia) has developed the Ryan Corner Project, which is an approved 52 turbine wind farm located on an area covering about 3,388 hectares in Moyne Shire near Yambuk in South West Victoria.

The wind farm was approved in 2008 for 68 turbines, and later amended in 2017 for a blade tip height of 180m and a reduction in turbines to 56. Since then the company has further reduced the number of turbines for construction to 52.

GPG has recently signed a Power Purchase Agreement (PPA) with the Australian retailer Snowy Hydro. Ryan Corner is the fourth project developed by GPG in Australia and the first one under a Corporate PPA. The project will entail a total investment of AUD \$359 million.

About the wind farm

- Total installed capacity: 218.4 MW
- Technology: V136 - 4.2MW Vestas wind turbines
- Number of Wind Turbine Generators (WTGs): 52
- Turbines blade tip height: 180 metres
- Connection: Victorian electricity grid via a 24km 132kV overhead transmission circuit from the wind farm to the existing 500kV Tarrone Terminal Station
- Number of wind farm host landholders: 11
- Number of transmission line host landholders: 10
- Turbine contractor: Vestas Australian Wind Technology
- Civil and electrical contractor (Balance of Plant): Decmil Group/RJE
- Operations & Maintenance contractor: Vestas Australian Wind Technology
- Transmission Network Service Provider (TSNP): AusNet Services
- Energy off-taker: Snowy Hydro (through a 15-year PPA for 75% energy)
- Expected construction commencement: Q1 2021
- Expected operations commencement: Q3 2022

Project status

- Wind farm planning permit: An extension has been recently granted to complete construction of the wind farm by August 2023
- Development plans associated to the planning permit: Under review and to update some of them following the recent approval of the Planning Permit Extension
- Connection application & agreements: On-Going
- Main contractors' agreements: Contracts signed with Vestas (turbines supply and install), Decmil/RJE (Civil and Electrical Balance of Plant respectively) and AusNet Services (Grid Connection Infrastructure).

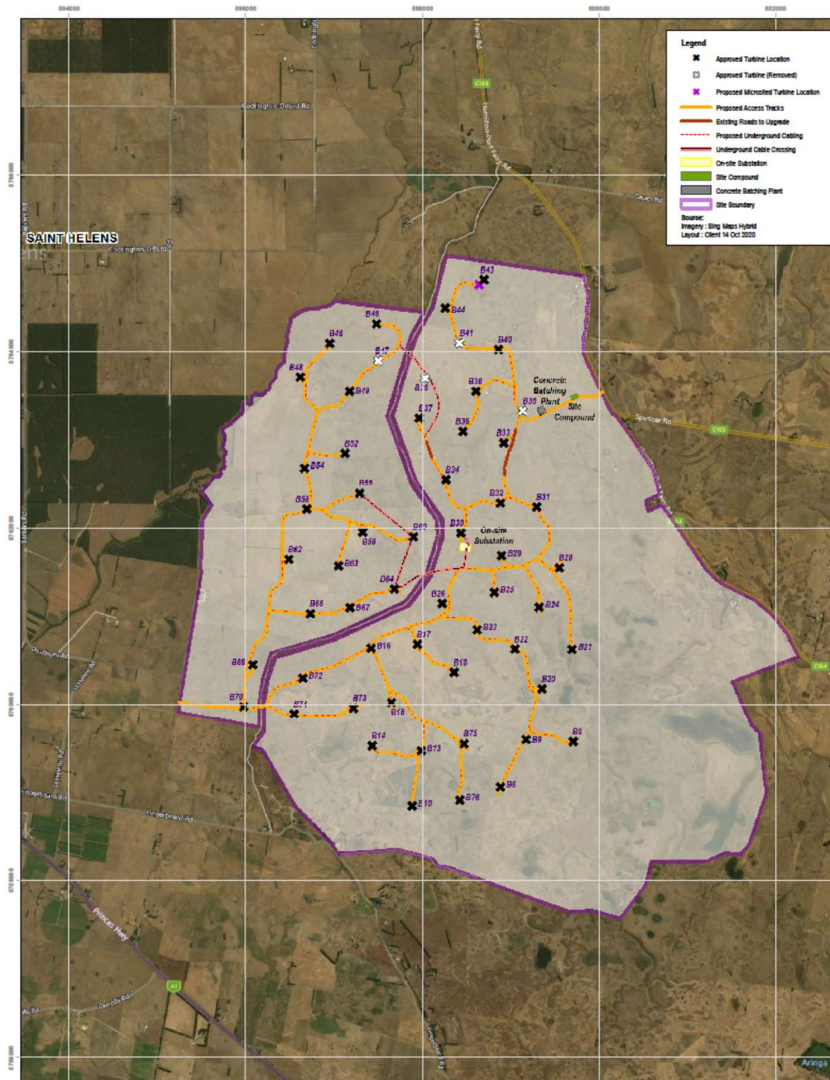
**Ryan Corner
Development Pty Ltd / Hawkesdale
Assets Pty Ltd**
Phone: 0400 403 282
E-mail: [info@globalpower-
generation.com.au](mailto:info@globalpower-generation.com.au)
Website:
[http://globalpower-
generation.com.au/](http://globalpower-
generation.com.au/)
Mail: Ryan Corner
Development Pty Ltd /
Hawkesdale Assets Pty Ltd,
Suite 4, Level 3, 24 Marcus
Clarke Street, Canberra
ACT 2600

Activities on site

- Earth resistivity testing: Completed
- Geotechnical studies: Expected before the Christmas break

Location

The map below shows the wind farm boundary, infrastructure, and turbine locations:



Access to the site will be from the Port Fairy-Hamilton Road and Youls Road during construction.

In accordance with Permit conditions, GPG is consulting with Council and VicRoads for the preparation of a Traffic Management Plan. The plan will include a requirement for specific road and intersection upgrades to accommodate the interaction between local and construction traffic. The TMP will also include an agreed road maintenance and repair process to be undertaken by the permit holder during construction of the wind farm.

Further info about the project

Additional info about the Project is available on GPG Australia website:

- <http://globalpower-generation.com.au/>

**Ryan Corner
Development Pty
Ltd / Hawkesdale
Assets Pty Ltd**
Phone: 0400 403 282
E-mail: info@globalpower-generation.com.au
Website:
<http://globalpower-generation.com.au/>
Mail: Ryan Corner
Development Pty Ltd /
Hawkesdale Assets Pty Ltd,
Suite 4, Level 3, 24 Marcus
Clarke Street, Canberra
ACT 2600

A website specifically designed for the Project will be developed soon.

Hawkesdale Wind Farm

Moving ahead with this project

In addition to Ryan Corner Project, GPG Australia has also developed the Hawkesdale Project, which is an approved 23 turbine wind farm located on an area covering about 2,280 hectares in Moyne Shire near the township of Hawkesdale in South West Victoria.

The wind farm was approved in 2008 for 31 turbines, and later amended in 2017 for a blade tip height of 180m and a reduction in turbines to 26. Since then the company has further reduced the number of turbines for construction to 23.

GPG has recently signed a Power Purchase Agreement (PPA) with a Multinational Client. Hawkesdale is the fifth project developed by GPG in Australia and the second Corporate PPA.

About the wind farm

- Total installed capacity: 96.9 MW
- Technology: V136 - 4.2MW Vestas wind turbines
- Number of Wind Turbine Generators (WTGs): 23
- Turbines blade tip height: 180 metres
- Connection: Victorian electricity grid via a 16km 132kV overhead transmission circuit from the wind farm to the existing 500kV Tarrone Terminal Station
- Number of wind farm host landholders: 4
- Number of transmission line host landholders: 10
- Turbine contractor: Vestas Australian Wind Technology
- Civil and electrical contractor (Balance of Plant): BMD Group/PPP
- Operations & Maintenance contractor: Vestas Australian Wind Technology
- Transmission Network Service Providers (TSNP): AusNet Services
- Energy off-taker: Multinational Corporation, on a long-term basis
- Expected construction commencement: Q1 2021
- Expected operations commencement: Q3 2022

Project status

- Wind farm planning permit: An extension has been recently granted by the Minister for Planning to complete construction by August 2023
- Development plans associated to the planning permit: Under review and to update some of them, following the recent approval of the Planning Permit Extension
- Connection application & agreements: On-going
- Main contractors' agreements: Already signed with Vestas (turbines supply and install), BMD/PPP (Civil and Electrical Balance of Plant respectively) and AusNet Services (Grid Connection Infrastructure)

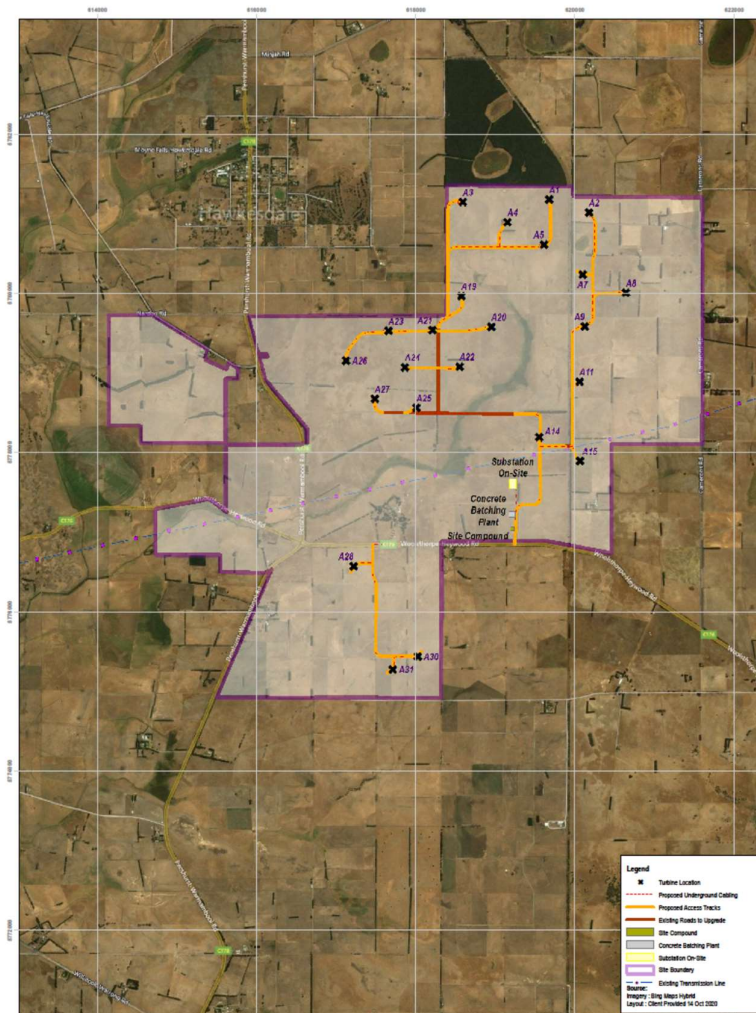
**Ryan Corner
Development Pty
Ltd / Hawkesdale
Assets Pty Ltd**
Phone: 0400 403 282
E-mail: [info@globalpower-
generation.com.au](mailto:info@globalpower-generation.com.au)
Website:
[http://globalpower-
generation.com.au/](http://globalpower-
generation.com.au/)
Mail: Ryan Corner
Development Pty Ltd /
Hawkesdale Assets Pty Ltd,
Suite 4, Level 3, 24 Marcus
Clarke Street, Canberra
ACT 2600

Activities on site

- Earth resistivity testing: Expected before the Christmas break
- Geotechnical studies: Expected before the Christmas break

Location

This map below shows the wind farm perimeter, lands, and the turbine locations:



Access to the site will be via two entry points on the Woolsthorpe-Heywood Road.

As in the case of Ryan Corner Project, a detailed Traffic Management Plan (TMP) is also currently being prepared in consultation with Moyne Shire Council and VicRoads.

Further info about the project

Additional info about the Project is available on GPG Australia website:

- <http://globalpower-generation.com.au/>
Home > Projects > VIC > Hawkesdale wind farm

A website specifically designed for the Project will be developed soon.

**Ryan Corner
Development Pty
Ltd / Hawkesdale
Assets Pty Ltd**
Phone: 0400 403 282
E-mail: [info@globalpower-
generation.com.au](mailto:info@globalpower-generation.com.au)
Website:
[http://globalpower-
generation.com.au/](http://globalpower-
generation.com.au/)
Mail: Ryan Corner
Development Pty Ltd /
Hawkesdale Assets Pty Ltd,
Suite 4, Level 3, 24 Marcus
Clarke Street, Canberra
ACT 2600

Transmission line

Connecting both wind farms to the grid

Ryan Corner and Hawkesdale wind farms will be connected to the high voltage transmission network via new 132kV, overhead transmission lines. A new 500/132kV switchyard will be built adjacent to the existing 500kV Tarrone terminal station and will include the necessary switchgear and a power transformer.

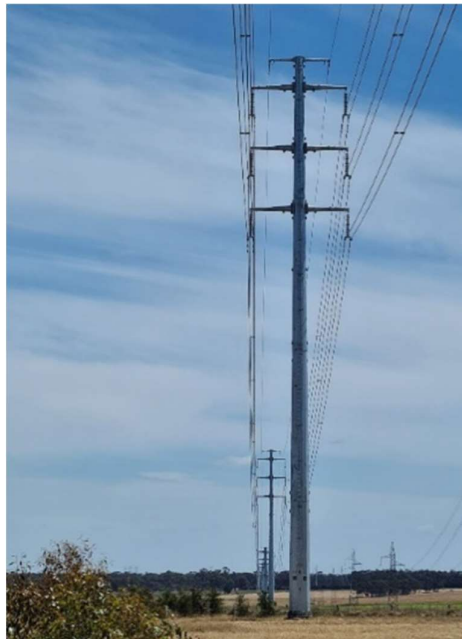
The transmission line corridor was included with the original Ryan Corner wind farm application, and easement agreements with host landholders were secured between 2012 and 2018.

GPG has partnered with AusNet Services to undertake preliminary activities, and ultimately to construct the transmission lines.

About the transmission line

- Transmission line length from Ryan Corner wind farm: 24km to Tarrone terminal station. Its final 3km section is shared with the Hawkesdale wind farm transmission line as it approaches the terminal station
- Transmission line length from Hawkesdale wind farm: 16km to Tarrone terminal station
- Easement corridor width: 30m width (15m either side)
- Power poles:
 - ✓ Advanced Australian technology
 - ✓ Galvanised steel (tubular)
 - ✓ Pole height typically ranges from 34-40m, depending on the terrain contours and length of each particular span (distance between poles), however, will not exceed 40m
 - ✓ Foundations for each pole would have a maximum footprint of 2.7m in diameter

The picture below shows the type of poles that will be installed:



**Ryan Corner
Development Pty Ltd / Hawkesdale
Assets Pty Ltd**
Phone: 0400 403 282
E-mail: [info@globalpower-
generation.com.au](mailto:info@globalpower-generation.com.au)
Website:
[http://globalpower-
generation.com.au/](http://globalpower-
generation.com.au/)
Mail: Ryan Corner
Development Pty Ltd /
Hawkesdale Assets Pty Ltd,
Suite 4, Level 3, 24 Marcus
Clarke Street, Canberra
ACT 2600

Transmission line status

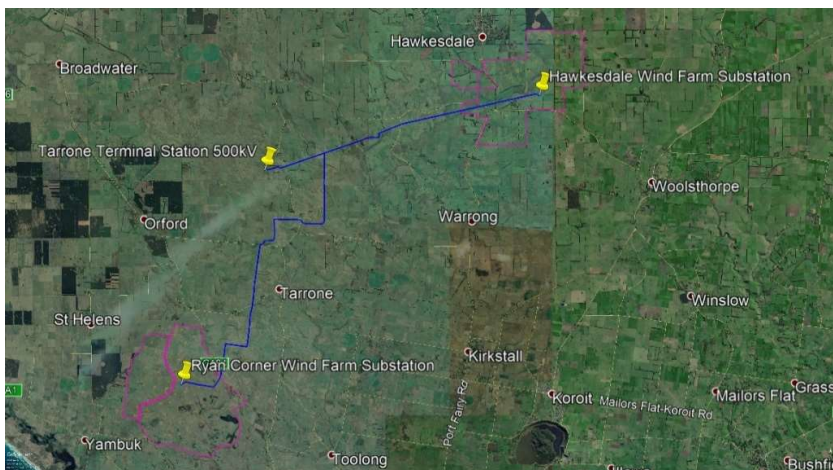
- **Permitting:** no separate permit required for the transmission line as it is covered under the wind farm Planning Application. A separate Planning Application has been lodged with DELWP for the removal of Native Vegetation associated to the transmission line corridor
- **Associated Plans:** native vegetation surveys, traffic management and cultural heritage management plans being prepared
- **Agreements:** existing Deeds to Grant an Easement for the transmission line and easements registered on Title for the whole corridor

Activities on site

- **Transmission line design:** AusNet Services is progressing the design to finalise the pole positions, minimise impacts on native vegetation and other features (road crossings, existing distribution lines, water bodies, etc.)
- **Easements surveys and geotechnical Studies:** over the coming weeks, AusNet Services will be conducting these to assist with the detailed design of poles foundations

Location

The map below shows the transmission lines corridor in blue:



**Ryan Corner
Development Pty Ltd / Hawkesdale
Assets Pty Ltd**
Phone: 0400 403 282
E-mail: [info@globalpower-
generation.com.au](mailto:info@globalpower-generation.com.au)
Website:
[http://globalpower-
generation.com.au/](http://globalpower-
generation.com.au/)
Mail: Ryan Corner
Development Pty Ltd /
Hawkesdale Assets Pty Ltd,
Suite 4, Level 3, 24 Marcus
Clarke Street, Canberra
ACT 2600

Other relevant information

Community engagement & benefits

- Community Engagement Plans

GPG is committed to establishing a high level of engagement with the local communities surrounding both wind farms and the transmission lines and providing benefits through the implementation of a Community Engagement Plan (CEP) for each Project. Further information about the main community engagement and benefit sharing initiatives will be provided in future Newsletters.

- Position vacant

GPG is currently looking for a Community and Stakeholder Officer to assist in the delivery of community-based initiatives throughout the construction and the operation periods. This officer will provide project updates and will engage with the broader Community. The person finally hired for this position will also represent the company in the Community Engagement Committees that Council is considering establishing for each project. This role will have a strong focus on delivering outcomes and customer service. The successful person will need to be a confident communicator and have a current driver's license and a car, as local travel will be required. The successful candidate will be employed on a contract basis for an initial two years and an office will be based in the Ryan Corner and Hawkesdale area. For further information please contact Nathan Micallef on 0400 403 282 or submit your resume and cover letter outlining your relevant skills and experience to Nathan.micallef@globalpower-generation.com.au

- Community groups

GPG is committed to engaging with the local community and building strong relationships. As part of this commitment, we would like to contribute and participate in the local community by engaging and informing local community groups. This will include providing construction updates, community project updates directly to your group. We would like to hear from any local community groups that are interested in having GPG attend a group meeting and potentially collaborate into the future. If your group is interested or if you would like further information, please contact Nathan Micallef on 0400 403 282 or Nathan.micallef@globalpower-generation.com.au

Other benefits provided by the Projects

- Contribution to the transition towards a sustainable energy supply

The two Projects are set to provide clean energy to approximately 120,000 homes.

- Employment opportunities

The wind farms projects will support almost 500 jobs during their construction. Additionally, more employment opportunities will be created during the operation period.

**Ryan Corner
Development Pty Ltd / Hawkesdale
Assets Pty Ltd**
Phone: 0400 403 282
E-mail: info@globalpower-generation.com.au
Website: <http://globalpower-generation.com.au/>
Mail: Ryan Corner
Development Pty Ltd /
Hawkesdale Assets Pty Ltd,
Suite 4, Level 3, 24 Marcus
Clarke Street, Canberra
ACT 2600

Environmental commitments

Based on the Planning Permit granted for both wind farms, a number of Development Plans will be implemented with the aim to reduce the potential environmental impacts from these Projects.

- **Off-Site Landscaping Program**

This program will be implemented to reduce the visual impact of the turbines from all dwellings within 4km of the nearest turbine. It must be submitted for its approval by the Minister for Planning before any turbine is commissioned.

Two options will be offered to potential applicants to:

- ✓ undertake landscaping on the landowner's land; or
- ✓ make a cash contribution in lieu (enough to cover the cost of the landowner establishing and maintain the landscaping for a period of at least 2 years).

- **Environmental Management Plan (EMP)**

Once approved by the Minister for Planning, this plan will be implemented before the construction starts. It includes several sub-plans such as:

- ✓ **Construction and Work Site Management Plan:** It relates to access and noise control, dust emissions, pollution management, water re-use, recycling, and disposal, etc.
- ✓ **Bushfire Prevention and Emergency Response Plan:** It is prepared in consultation with the Moyne Shire Council and the Country Fire Authority.
- ✓ **Archaeological Management Plan:** It ensures that before any buildings or works commence in association with the Projects, any cultural heritage findings, or artefacts (if any) will be appropriately protected.

- **Bats and Avifauna Management Plan**

This plan must be submitted to and approved by the Minister for Planning prior to the commissioning of the first turbine. It covers the detection, management and mitigation of any significant bird and bat potential collisions arising from the wind farms operation.

- **Native Vegetation Plan**

This plan must be submitted to and approved by the Minister of Planning before any native vegetation is removed. It involves the preparation of a Biodiversity Assessment Report which analyses and quantifies the native vegetation that may result impacted. This, with the purpose of reviewing the designs of the works and minimising as much as possible this impact.

- **Cultural Heritage Assessment**

In relation to the lands traversed by the transmission line, this assessment will be undertaken to ensure the protection of any valuable elements of Cultural Heritage in that area.

**Ryan Corner
Development Pty Ltd / Hawkesdale
Assets Pty Ltd**
Phone: 0400 403 282
E-mail: info@globalpower-generation.com.au
Website: <http://globalpower-generation.com.au/>
Mail: Ryan Corner
Development Pty Ltd /
Hawkesdale Assets Pty Ltd,
Suite 4, Level 3, 24 Marcus
Clarke Street, Canberra
ACT 2600

About our Company

Global Power Generation Australia (GPG Australia) and its subsidiaries

GPG Australia is the developer (owner) of the Ryan Corner and Hawkesdale wind farms. The development of both Projects has been respectively performed by two subsidiaries of GPG Australia:

- Ryan Corner Development Pty Ltd
- Hawkesdale Assets Pty Ltd

GPG Australia has signed Power Purchase Agreements (PPA) with third party off-takers over the past few months. The signing of these PPA's will allow GPG to begin the construction of the Ryan Corner and Hawkesdale wind farms.

For further information about GPG Australia, please visit our website on:

- ✓ <http://globalpower-generation.com.au/>

Global Power Generation (GPG) around the world

GPG Australia is the Australian arm of a bigger company group, Global Power Generation, fully dedicated to international power generation. GPG is 75% owned by the Naturgy Energy Group and 25% owned by the Kuwait Investment Authority (KIA).

GPG manages a total installed capacity of 4,100 MW and employs around 800 people worldwide. We are backed by a variety of projects that we have developed in different countries around the world and our best resource is the experience and know-how of our team. We bring an owner-orientated approach to each of our projects and primarily focus on long-term projects. We are a company dedicated to the environment, health, safety, and the community

For further information about GPG, please visit our website on:

- ✓ <https://www.globalpower-generation.com/>

Naturgy Energy Group (Naturgy)

Naturgy is leading multinational Spanish group in the energy sector, the largest integrated gas and electricity company in Spain and Latin America, operating in 30 countries with a growing contribution from international activity.

For further information about Naturgy, please visit our website on:

- ✓ <https://www.naturgy.com/en/home>

**Ryan Corner
Development Pty Ltd / Hawkesdale
Assets Pty Ltd**
Phone: 0400 403 282
E-mail: [info@globalpower-
generation.com.au](mailto:info@globalpower-generation.com.au)
Website:
[http://globalpower-
generation.com.au/](http://globalpower-
generation.com.au/)
Mail: Ryan Corner
Development Pty Ltd /
Hawkesdale Assets Pty Ltd,
Suite 4, Level 3, 24 Marcus
Clarke Street, Canberra
ACT 2600