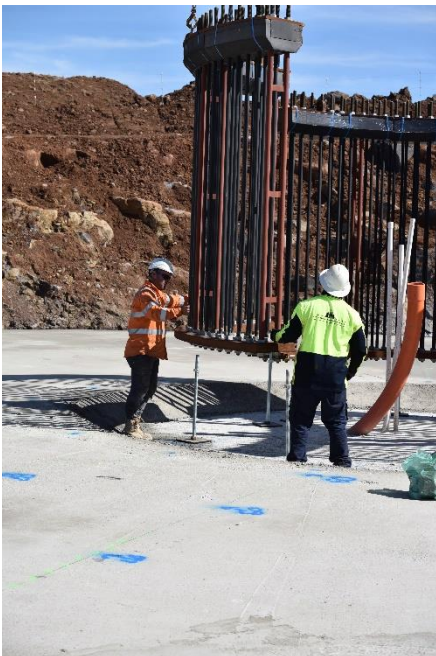


Ryan Corner Wind Farm

Weekly Construction Report January 16, 2023

General:

The wind farm site is a busy place. Earthworks on foundations and access tracks, fencing, plumbing, trenching for the cabling and anchor cages being constructed and installed for the turbines all happening around the wind farm.



Connections:

Work on the bench at the collector substation is progressing.

Trenching has commenced for the internal cabling; no cables have been laid. The trenches run adjacent to the access tracks. Access tracks are being built along the transmission line easement between Ryan Corner wind farm and the Tarrone North Terminal station.

Foundation:

Preparations are in place for the next foundation pour. Work is underway on more than half the turbine locations.

Water and fences:

Fencing is continuing with permanent and temporary fences and installing cattle grids. Wash down bays are installed between landowners. The plumber is working hard at moving pipes and installing troughs. An additional turkey's nest has been constructed for water on the western side of the site.

