

# Ryan Corner Wind Farm

## Weekly Construction Report January 23, 2023

### General:

After a tour of the site, I can confirm that there is definitely a lot of work happening on site. Currently 36 excavators plus many other items of civil plant.

The fencing and plumbing contractors are continuing to move ahead of the civil works. Trenches for the high voltage cabling is underway and some cables have been laid.



### Connections:

The foundations at the Tarrone terminal station are completed and structures are being assembled.

The access tracks for the transmission line are continuing and are approximately 70% completed.



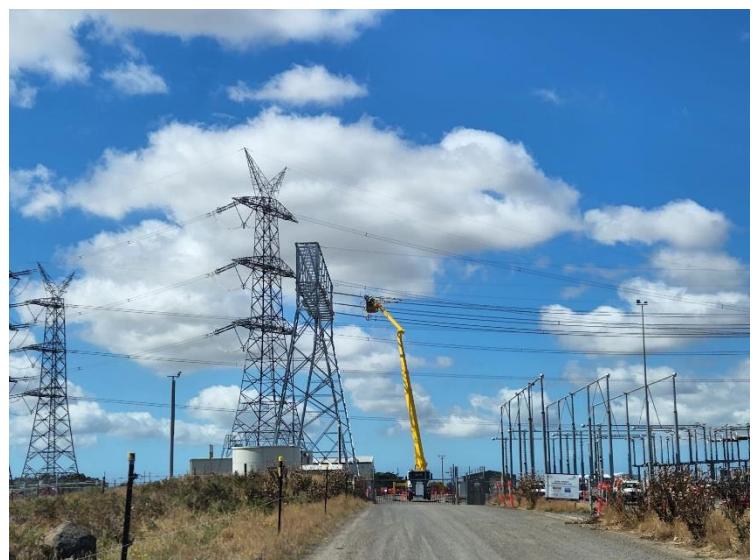
S

### Foundation:

4 foundations have been poured and the first of these is being backfilled. Close to half of the turbine foundations are in some form of excavation, from stripping to final concrete pours. Approximately 700 cubic meters of concrete are poured in each foundation.

### Access tracks:

The access tracks are winding through the site and connecting to the turbine sites with most fully trafficable.



Ryan Corner Development Pty. Ltd.

Phone: 0428 867 646 (Debra Dumesny – Community and Stakeholder Engagement)

Email: [ryancornerwindfarm@globalpower-generation.com.au](mailto:ryancornerwindfarm@globalpower-generation.com.au) or [debra.dumesny@globalpower-generation.com.au](mailto:debra.dumesny@globalpower-generation.com.au)

Website: [www.ryancornerwindfarm.com.au](http://www.ryancornerwindfarm.com.au)

Mail: Ryan Corner Development Pty Ltd, Suite A, Level 3, 73 Northbourne Avenue, Canberra ACT 2601