



# Ryan Corner Wind Farm

Ryan Corner Development Pty Ltd

January 2023 Newsletter

**Phone:** 0428 867 646  
1800 457 181

**E-mail:**  
[debra.dumesny@globalpower-generation.com.au](mailto:debra.dumesny@globalpower-generation.com.au)  
[ryancornerwindfarm@globalpower-generation.com.au](mailto:ryancornerwindfarm@globalpower-generation.com.au)

**Website:**  
<https://ryancornerwindfarm.globalpower-generation.com.au>

**Mail:** Ryan Corner Development Pty Ltd  
Suite A, Level 3, 73 Northbourne Avenue, Canberra ACT  
2601

# Ryan Corner Wind Farm

## Project Status

- Wind farm planning permit and associated plans:
  - ✓ The amended planning permit and its accompanying development plans are available on the Ryan Corner wind farm web site.
  - ✓ Mobilisation and site compound establishment (East and west site entrances – Hamilton Port Fairy Road and Youls Road)
- Connection application & agreements:
  - ✓ Connection application submitted to AEMO is in progress.
  - ✓ Agreements on-going, the Connection Services Agreement is executed.

## Activities On Site

- Under progress:
  - ✓ All of the components (blades, nacelles, hubs and rotors) have arrived and are being stored at Portland.
  - ✓ Cultural Heritage Inductions are continuing as contractors come on site.
  - ✓ Internal fencing and plumbing continues.
  - ✓ The spine road connecting the east and west entrances is trafficable.
  - ✓ On-site batch plant in operation. 6 turbine foundations have been poured.
  - ✓ Nearly half of the turbine locations and hardstands are at some level of construction.

## Weekly Construction Updates

- ✓ Weekly construction updates available on the Ryan Corner web site, follow the link: [Ryan Corner Wind Farm Progress - Global Power Generation \(globalpower-generation.com.au\)](https://ryancornerwindfarm.globalpower-generation.com.au)



**Ryan Corner  
Development Pty Ltd**  
**Phone:** 0428 867 646  
1800 457 181  
**E-mail:**  
[debra.dumesny@globalpower-generation.com.au](mailto:debra.dumesny@globalpower-generation.com.au)  
[ryancornerwindfarm@globalpower-generation.com.au](mailto:ryancornerwindfarm@globalpower-generation.com.au)  
**Website:**  
<https://ryancornerwindfarm.globalpower-generation.com.au/>  
**Mail:**  
Ryan Corner Development Pty Ltd, Suite A, Level 3,  
73 Northbourne Avenue,  
Canberra ACT 2600



## Construction Work Hours

Civil construction earthworks have now commenced on Ryan Corner wind farm to construct the access tracks and hardstands. Generally, the civil contractor will be working:

- ✓ Monday to Friday:..... 7am to 6pm
- ✓ Saturday:..... 7am to 4pm (regular)
- ✓ Sunday/Public Holiday:..... 7am to 1pm (occasional as required)

Saturday afternoon (1pm to 4pm) and Sunday/Public Holiday, works will be restricted to “managed impact” and “low impact” works as defined by the EPA guidelines.

Sunday works have commenced each week from November 6.

The purpose of weekend work is to reduce the overall construction duration, and subsequently the duration of impact on the local community. If you have any concerns or queries, please contact Debra Dumesny 0428 867 646 or [debra.dumesny@globalpower-generation.com.au](mailto:debra.dumesny@globalpower-generation.com.au)

## Transmission Line and Tarrone Terminal Station

- ✓ Foundations for the new 500kV switch gear at Tarrone Terminal Station are complete. 500kV switchgear installation is in progress.
- ✓ Works on the 132kV switchyard at the Tarrone Terminal Station are progressing with foundations almost complete. Transformer yard earthing is complete, and new fencing has been installed.
- ✓ Construction works for the transmission line are progressing, including access track construction, fencing and site clearing.
- ✓ Construction works at the new Collector Sub Station at the Ryan Corner Wind Farm site is progressing.



**Ryan Corner  
Development Pty Ltd**  
**Phone:** 0428 867 646  
1800 457 181  
**E-mail:**  
[debra.dumesny@globalpower-generation.com.au](mailto:debra.dumesny@globalpower-generation.com.au)  
[ryancornerwindfarm@globalpower-generation.com.au](mailto:ryancornerwindfarm@globalpower-generation.com.au)  
**Website:**  
<https://ryancornerwindfarm.globalpower-generation.com.au/>  
**Mail:**  
Ryan Corner Development Pty Ltd, Suite A, Level 3,  
73 Northbourne Avenue,  
Canberra ACT 2600

# Further Information-

## Community Engagement Committee

The Ryan Corner Wind Farm Community Engagement Committee (CEC) October meeting was held. The next meeting is scheduled for January 2023. Minutes and notes from all CEC meetings are available on the Moyne Shire web site, from CEC members or please contact Debra Dumesny on 0428 867 646 or by email [debra.dumesny@globalpower-generation.com.au](mailto:debra.dumesny@globalpower-generation.com.au) to request a copy of the minutes/notes.

We encourage you to contact a CEC representative if you wish to bring concerns to the CEC for discussion, or if you would like to be included on the distribution list for the confirmed minutes and updates.

Contact details for your local community members can be found by contacting the Moyne Shire Council.

## Do you want to know more?

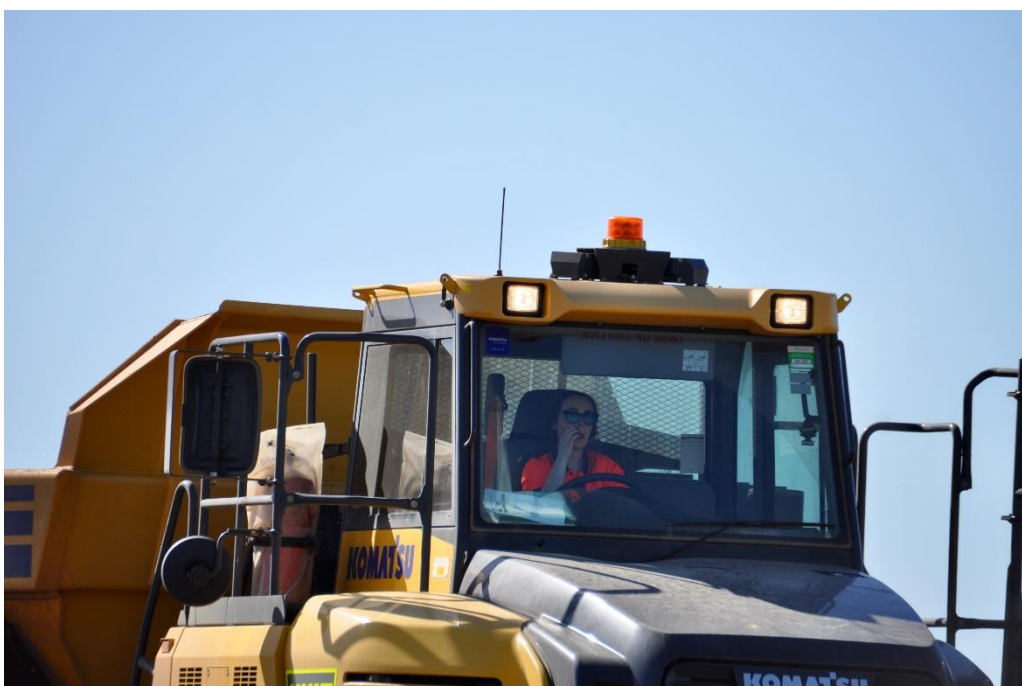
If you would like to know more about the progress at the wind farm, check the latest updates on the web page or maybe you are a member of a club or group that would like us to visit and explain further about the construction and operation of the wind farm, please contact Debra on 0428 867 646

## Employment Opportunities

Please contact our Community and Stakeholder Engagement Officer, Debra Dumesny at [debra.dumesny@globalpower-generation.com.au](mailto:debra.dumesny@globalpower-generation.com.au) if you are interested in working at Ryan Corner Wind Farm.

## Local Accommodation for Construction Workers

As construction commences, short term accommodation will be required for workers. If you have a property that could be used as accommodation for workers, please contact our Community Engagement Officer, Debra Dumesny at [debra.dumesny@globalpower-generation.com.au](mailto:debra.dumesny@globalpower-generation.com.au).



**Ryan Corner  
Development Pty Ltd**  
**Phone:** 0428 867 646  
1800 457 181  
**E-mail:**  
[debra.dumesny@globalpower-generation.com.au](mailto:debra.dumesny@globalpower-generation.com.au)  
[ryancornerwindfarm@globalpower-generation.com.au](mailto:ryancornerwindfarm@globalpower-generation.com.au)  
**Website:**  
<https://ryancornerwindfarm.globalpower-generation.com.au/>  
**Mail:**  
Ryan Corner Development Pty Ltd, Suite A, Level 3,  
73 Northbourne Avenue,  
Canberra ACT 2600

## Complaints Investigation and Response Plan (CIRP)

The CIRP has been endorsed and can be found on our <https://ryancornerwindfarm.globalpower-generation.com.au/> following the link The Project>Relevant documentation.

Complaints can be made in the following ways:

- ✓ Phone: 1800 457 181 or 0428 867 646
- ✓ E-mail: [debra.dumesny@globalpower-generation.com.au](mailto:debra.dumesny@globalpower-generation.com.au)  
[ryancornerwindfarm@globalpower-generation.com.au](mailto:ryancornerwindfarm@globalpower-generation.com.au)
- ✓ Mail: Ryan Corner Development Pty Ltd  
Suite A, Level 3, 73 Northbourne Avenue,  
Canberra ACT 2601

## Contact Us

### Ryan Corner wind farm site office

Please phone, email, or visit us if you have any enquiries. Debra will be at the site office on Monday, Tuesday and Wednesday. The office generally has someone present on all days. The Hawkesdale office remains open on Thursday and Friday. These days may change on occasion.



Contact Debra on 0428 867 646 or by email [debra.dumesny@globalpower-generation.com.au](mailto:debra.dumesny@globalpower-generation.com.au)

### How to be included on the Email List

To be included on the distribution list for our newsletter and updates via email, please contact our Community and Stakeholder Engagement Officer Debra on 0428 867 646 or by email [debra.dumesny@globalpower-generation.com.au](mailto:debra.dumesny@globalpower-generation.com.au) or [ryancornerwindfarm@globalpower-generation.com.au](mailto:ryancornerwindfarm@globalpower-generation.com.au)



**Ryan Corner Development Pty Ltd**  
**Phone:** 0428 867 646  
1800 457 181  
**E-mail:**  
[debra.dumesny@globalpower-generation.com.au](mailto:debra.dumesny@globalpower-generation.com.au)  
[ryancornerwindfarm@globalpower-generation.com.au](mailto:ryancornerwindfarm@globalpower-generation.com.au)  
**Website:**  
<https://ryancornerwindfarm.globalpower-generation.com.au/>  
**Mail:**  
Ryan Corner Development Pty Ltd, Suite A, Level 3,  
73 Northbourne Avenue,  
Canberra ACT 2600