



Ryan Corner Wind Farm

Ryan Corner Development Pty Ltd

February 2023 Newsletter

Phone: 0428 867 646
1800 457 181

E-mail:
debra.dumesny@globalpower-generation.com.au
ryancornerwindfarm@globalpower-generation.com.au

Website:
<https://ryancornerwindfarm.globalpower-generation.com.au>

Mail: Ryan Corner Development Pty Ltd
Suite A, Level 3, 73 Northbourne Avenue, Canberra ACT
2601

Ryan Corner Wind Farm

Project Status

- Wind farm planning permit and associated plans:
 - ✓ The amended planning permit and its accompanying development plans are available on the Ryan Corner wind farm web site.
- Connection application & agreements:
 - ✓ Connection application submitted to AEMO is in progress.
 - ✓ Agreements on-going, the Connection Services Agreement is executed.

Activities On Site

- Under progress:
 - ✓ All of the components (blades, nacelles, hubs and rotors) have arrived and are being stored at Portland.
 - ✓ Cultural Heritage Inductions are continuing as contractors come on site.
 - ✓ On-site batch plant in operation. 12 turbine foundations have been poured so far.
 - ✓ More than half of the turbine locations and hardstands are at some level of construction.
 - ✓ 23 km of internal access tracks are trafficable.
 - ✓ Youls Road re sheeting partially completed.

Weekly Construction Updates

- ✓ Weekly construction updates available on the Ryan Corner web site, follow the link: [Ryan Corner Wind Farm Progress - Global Power Generation \(globalpower-generation.com.au\)](https://ryancornerwindfarm.globalpower-generation.com.au)



**Ryan Corner
Development Pty Ltd**
Phone: 0428 867 646
1800 457 181
E-mail:
debra.dumesny@globalpower-generation.com.au
ryancornerwindfarm@globalpower-generation.com.au
Website:
<https://ryancornerwindfarm.globalpower-generation.com.au/>
Mail:
Ryan Corner Development Pty Ltd, Suite A, Level 3,
73 Northbourne Avenue,
Canberra ACT 2600

Construction Work Hours

Civil construction earthworks have now commenced on Ryan Corner wind farm to construct the access tracks and hardstands. Generally, the civil contractor will be working:

- ✓ Monday to Friday:..... 7am to 6pm
- ✓ Saturday:..... 7am to 4pm (regular)
- ✓ Sunday/Public Holiday: 7am to 1pm (occasional as required)

Saturday afternoon (1pm to 4pm) and Sunday/Public Holiday, works will be restricted to “managed impact” and “low impact” works as defined by the EPA guidelines.

Sunday works have commenced each week from November 6.

The purpose of weekend work is to reduce the overall construction duration, and subsequently the duration of impact on the local community. If you have any concerns or queries, please contact Debra Dumesny 0428 867 646 or debra.dumesny@globalpower-generation.com.au

Transmission Line and Tarrone Terminal Station

- ✓ Main Transformer foundation at Tarrone Terminal Station works near completion with transformer firewalls up.
- ✓ Tarrone Terminal Station Transformer scheduled to arrive end of March.
- ✓ Construction works for the transmission line are progressing, with Drilling works started near Tarrone Terminal Station, completion of access tracks at Ryan Corner Wind Farm section.
- ✓ Construction works at the new Collector Sub Station at the Ryan Corner Wind Farm site is progressing as scheduled.



Ryan Corner Development Pty Ltd

Phone: 0428 867 646
1800 457 181

E-mail:
debra.dumesny@globalpower-generation.com.au
ryancornerwindfarm@globalpower-generation.com.au

Website:
<https://ryancornerwindfarm.globalpower-generation.com.au/>

Mail:
Ryan Corner Development Pty Ltd, Suite A, Level 3,
73 Northbourne Avenue,
Canberra ACT 2600

Community Engagement and Benefit Sharing

Community Engagement Committee

The Ryan Corner Wind Farm Community Engagement Committee (CEC) October meeting was held. The next meeting is scheduled for January 2023. Minutes and notes from all CEC meetings are available on the Moyne Shire web site, from CEC members or please contact Debra Dumesny on 0428 867 646 or by email debra.dumesny@globalpower-generation.com.au to request a copy of the minutes/notes.

We encourage you to contact a CEC representative if you wish to bring concerns to the CEC for discussion, or if you would like to be included on the distribution list for the confirmed minutes and updates.

Contact details for your local community members can be found by contacting the Moyne Shire Council.

Complaints Investigation and Response Plan (CIRP)

The CIRP has been endorsed and can be found on our <https://ryancornerwindfarm.globalpower-generation.com.au/> following the link The Project>Relevant documentation.

Complaints can be made in the following ways:

- ✓ Phone: 1800 457 181 or 0428 867 646
- ✓ E-mail: debra.dumesny@globalpower-generation.com.au
ryancornerwindfarm@globalpower-generation.com.au
- ✓ Mail: Ryan Corner Development Pty Ltd
Suite A, Level 3, 73 Northbourne Avenue,
Canberra ACT 2601

Do you know about

Bushfire and Emergency Response Plan (BERP)

We were recently faced with the first Total Fire Ban day for this fire season. It is timely that we share with you the strategies and actions in place and contained within the endorsed BERP for the Ryan Corner Wind Farm.

Ryan Corner Wind Farm worked closely with the CFA, who in turn liaise with the local brigades, in the development of the BERP and the implementation of the strategies in the plan. The CFA, including local brigades, have attended familiarisation visits to the wind farm site and have supported GPG and their contractors in ensuring the best possible steps are taken in the event of a fire or other emergency.

Activity is halted when weather conditions reach a level where the wind and/or temperature are deemed to be a risk. Some essential activities may still take place such as completing a foundation concrete pour or tower erection.

**Ryan Corner
Development Pty Ltd**
Phone: 0428 867 646
1800 457 181
E-mail:
debra.dumesny@globalpower-generation.com.au
ryancornerwindfarm@globalpower-generation.com.au
Website:
<https://ryancornerwindfarm.globalpower-generation.com.au/>
Mail:
Ryan Corner Development Pty Ltd, Suite A, Level 3,
73 Northbourne Avenue,
Canberra ACT 2600

What steps are taken on a day of total fire ban?

- A briefing to all construction personnel on site at the morning pre start meeting
- Ensuring all water supplies are checked and tested
 - Tanks and fittings
 - Water trucks
 - On site dams
 - Vehicle/plant fire extinguishers
- Briefing of the on site emergency response team
- Monitoring the emergency and weather apps
- Visual monitoring of the weather conditions including temperature and wind
- Hot work permits on a total fire ban day would not be issued without an exemption from the local brigade.



Further Information

Do you want to know more?

If you would like to know more about the progress at the wind farm, check the latest updates on the web page or maybe you are a member of a club or group that would like us to visit and explain further about the construction and operation of the wind farm, please contact Debra on 0428 867 646

Employment Opportunities

Please contact our Community and Stakeholder Engagement Officer, Debra Dumesny at debra.dumesny@globalpower-generation.com.au if you are interested in working at Ryan Corner Wind Farm.

Ryan Corner Development Pty Ltd

Phone: 0428 867 646
1800 457 181

E-mail:
debra.dumesny@globalpower-generation.com.au
ryancornerwindfarm@globalpower-generation.com.au

Website:
<https://ryancornerwindfarm.globalpower-generation.com.au/>

Mail:
Ryan Corner Development Pty Ltd, Suite A, Level 3,
73 Northbourne Avenue,
Canberra ACT 2600

Local Accommodation for Construction Workers

As construction commences, short term accommodation will be required for workers. If you have a property that could be used as accommodation for workers, please contact our Community Engagement Officer, Debra Dumesny at debra.dumesny@globalpower-generation.com.au.

Contact Us

Ryan Corner wind farm site office

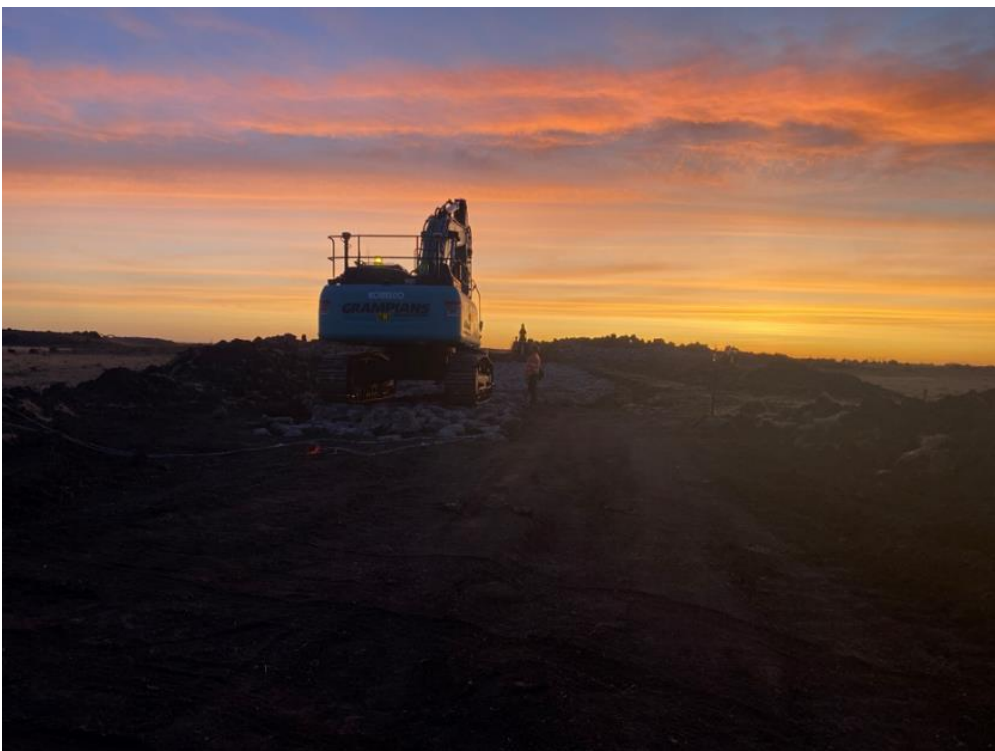
Please phone, email, or visit us if you have any enquiries. Debra will be at the site office on Monday, Tuesday and Wednesday. The office generally has someone present on all days. The Hawkesdale office remains open on Thursday and Friday. These days may change on occasion.



Contact Debra on 0428 867 646 or by email debra.dumesny@globalpower-generation.com.au

How to be included on the Email List

To be included on the distribution list for our newsletter and updates via email, please contact our Community and Stakeholder Engagement Officer Debra on 0428 867 646 or by email debra.dumesny@globalpower-generation.com.au or ryancornerwindfarm@globalpower-generation.com.au



**Ryan Corner
Development Pty Ltd**
Phone: 0428 867 646
1800 457 181
E-mail: debra.dumesny@globalpower-generation.com.au
ryancornerwindfarm@globalpower-generation.com.au
Website: <https://ryancornerwindfarm.globalpower-generation.com.au/>
Mail: Ryan Corner Development Pty Ltd, Suite A, Level 3, 73 Northbourne Avenue, Canberra ACT 2600