

Ryan Corner Wind Farm

Ryan Corner Development Pty Ltd

May 2023 Newsletter

Phone: 0428 867 646
1800 457 181

E-mail:
debra.dumesny@globalpower-generation.com.au
ryancornerwindfarm@globalpower-generation.com.au

Website:
<https://ryancornerwindfarm.globalpower-generation.com.au>

Mail: Ryan Corner Development Pty Ltd
Suite A, Level 3, 73 Northbourne Avenue, Canberra ACT
2601

Ryan Corner Wind Farm

Project Status

- Wind farm planning permit and associated plans:
 - ✓ The amended planning permit and its accompanying development plans are available on the Ryan Corner wind farm web site.
- Connection application & agreements:
 - ✓ Connection application submitted to AEMO is in progress.
 - ✓ Agreements on-going, the Connection Services Agreement is executed.

Activities On Site

- Under progress:
 - ✓ All of the components (blades, nacelles, hubs and rotors) have arrived and are being stored at Portland.
 - ✓ 38 turbine foundations have been poured so far.
 - ✓ 25 have been backfilled
 - ✓ The first directionally drilling for the underground cabling to cross Riverside Road has been completed.
 - ✓ 35 km of internal access tracks are trafficable.



**Ryan Corner
Development Pty Ltd**

Phone: 0428 867 646
1800 457 181

E-mail:
debra.dumesny@globalpower-generation.com.au
ryancornerwindfarm@globalpower-generation.com.au

Website:
<https://ryancornerwindfarm.globalpower-generation.com.au/>

Mail:
Ryan Corner Development Pty Ltd, Suite A, Level 3,
73 Northbourne Avenue,
Canberra ACT 2600

Weekly Construction Updates

- ✓ Weekly construction updates available on the Ryan Corner web site, follow the link: [Ryan Corner Wind Farm Progress - Global Power Generation \(globalpower-generation.com.au\)](http://Ryan_Corner_Wind_Farm_Progress_-_Global_Power_Generation(globalpower-generation.com.au))

Construction Work Hours

Civil construction earthworks have now commenced on Ryan Corner wind farm to construct the access tracks and hardstands. Generally, the civil contractor will be working:

- ✓ Monday to Friday:..... 7am to 6pm
- ✓ Saturday:..... 7am to 4pm (regular)
- ✓ Sunday/Public Holiday: 7am to 1pm (occasional as required)

Saturday afternoon (1pm to 4pm) and Sunday/Public Holiday, works will be restricted to “managed impact” and “low impact” works as defined by the EPA guidelines.

Sunday works have commenced each week from November 6.

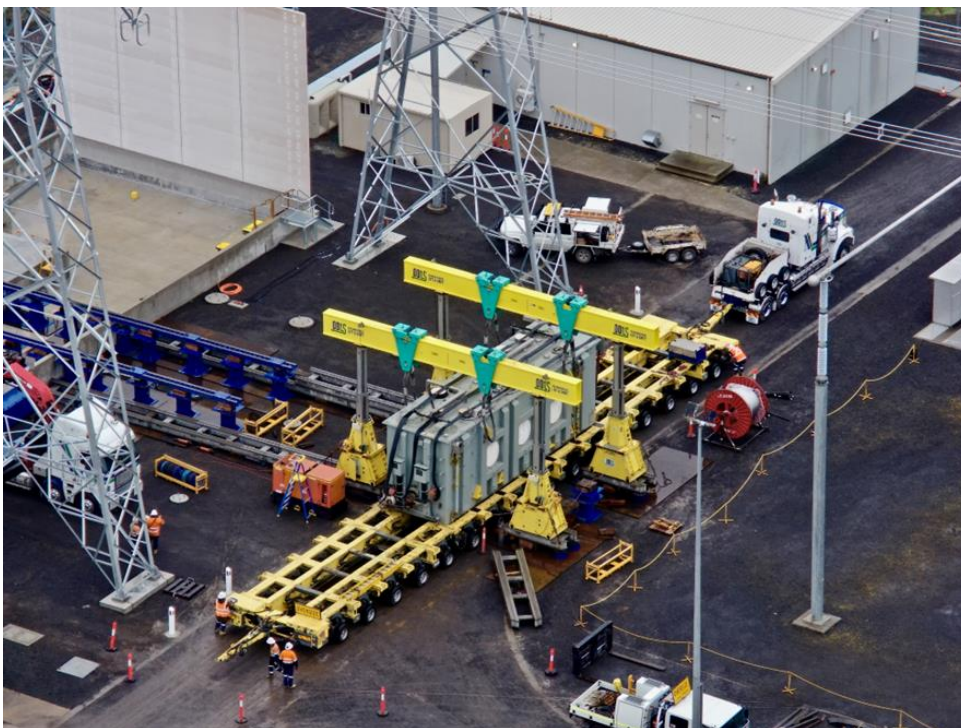
The purpose of weekend work is to reduce the overall construction duration, and subsequently the duration of impact on the local community. If you have any concerns or queries, please contact Debra Dumesny 0428 867 646 or debra.dumesny@globalpower-generation.com.au



**Ryan Corner
Development Pty Ltd**
Phone: 0428 867 646
1800 457 181
E-mail: debra.dumesny@globalpower-generation.com.au
ryancornerwindfarm@globalpower-generation.com.au
Website: <https://ryancornerwindfarm.globalpower-generation.com.au/>
Mail: Ryan Corner Development Pty Ltd, Suite A, Level 3, 73 Northbourne Avenue, Canberra ACT 2600

Transmission Line, Collector Substation and Tarrone Terminal Station

- ✓ At Tarrone Terminal Station, installation of new 500kV and 132kV switch gear has been completed and 132kV interplant connections, secondary cable installation and pre-commissioning tests are in progress.
- ✓ 420MVA, 500kV/132kV Power transformer delivered to Tarrone, and is being installed.
- ✓ Construction works for the transmission line are progressing with access track construction works completed, approximately 75% of transmission line pole foundations constructed, more than half of poles installed and conductor stringing completed on 7% of the transmission line.
- ✓ Construction works at the new Collector Sub Station at the Ryan Corner Wind Farm site are progressing as scheduled. The two new 120MVA 132kV/33kV transformer have been delivered and installed. All the primary plant and bus bars installed and interplant electrical connections are in progress.. The control building has been installed



**Ryan Corner
Development Pty Ltd**

Phone: 0428 867 646
1800 457 181

E-mail:
debra.dumesny@globalpower-generation.com.au
ryancornerwindfarm@globalpower-generation.com.au

Website:
<https://ryancornerwindfarm.globalpower-generation.com.au/>

Mail:
Ryan Corner Development Pty Ltd, Suite A, Level 3,
73 Northbourne Avenue,
Canberra ACT 2600

Do you know about?

Health, Safety and Environment (HSE) Supervisor

Sometimes overlooked as a career path in the construction industry, the HSE supervisor plays an important role during the construction and operation of a renewable energy facility.

GPG Australia have a dedicated HSE supervisor on each project during construction, and a permanent safety management team for their energy facilities during operation. The role of the HSE supervisor is crucial to the smooth running of a project and ensures the endorsed Environmental Management Plan (EMP), Native Vegetation Plan (NVP) and overall Workplace Health and Safety requirements are complied with.

The HSE supervisor checks daily on aspects of the EMP, which contains 7 sub plans, that the NVP is being followed and conducts regular health and safety checks. Aside from endorsed management plans, workplace health and safety is governed by State legislation.

The role is vital to the safe construction of the projects and ensures that native vegetation is protected and activities are conducted with the least affect to the environment. The EMP for Ryan Corner is a thorough but concise plan that contains the following sub plans:

1. Construction and Worksite Management Plan
2. Hydrocarbon & Hazardous Substances Plan
3. Blasting Management Plan
4. Archaeological Management Plan (withheld due to sensitive locations identified)
5. Pest Animal Management Plan
6. Pest Plant Management Plan
7. Bushfire Prevention and Emergency Response Plan

The endorsed management plans do not apply only during construction, but for the life of the renewable energy facility.

Some regular tasks for the HSE supervisor are daily checks for workplace health and safety, auditing the records of the contractors to ensure they are following procedures, checking that the fences protecting native vegetation and culturally sensitive sites meet the required standard and remains in place, and inspecting to see that weeds or vermin are not spreading as the ground is disturbed.

Safety of the workforce and the environment on GPG Australia projects will always be crucial and the HSE supervisors play a major role in ensuring we all go home at the end of the day to our loved ones.

The endorsed management plans can be found on the web site at <https://ryancornerwindfarm.globalpower-generation.com.au/the-project/relevant-documentation/>

Ryan Corner Development Pty Ltd

Phone: 0428 867 646
1800 457 181

E-mail:
debra.dumesny@globalpower-generation.com.au
ryancornerwindfarm@globalpower-generation.com.au

Website:
<https://ryancornerwindfarm.globalpower-generation.com.au/>

Mail:
Ryan Corner Development Pty Ltd, Suite A, Level 3,
73 Northbourne Avenue,
Canberra ACT 2600

Community Engagement and Benefit Sharing

Community Engagement Committee

The Ryan Corner Wind Farm Community Engagement Committee (CEC) March meeting was held. The next meeting is scheduled for May 2023. Minutes and notes from all CEC meetings are available on the Moyne Shire web site, from CEC members or please contact Debra Dumesny on 0428 867 646 or by email debra.dumesny@globalpower-generation.com.au to request a copy of the minutes/notes.

We encourage you to contact a CEC representative if you wish to bring concerns to the CEC for discussion, or if you would like to be included on the distribution list for the confirmed minutes and updates.

Contact details for your local community members can be found by contacting the Moyne Shire Council.

Complaints Investigation and Response Plan (CIRP)

The CIRP has been endorsed and can be found on our <https://ryancornerwindfarm.globalpower-generation.com.au/> following the link The Project>Relevant documentation.

Complaints can be made in the following ways:

- ✓ Phone: 1800 457 181 or 0428 867 646
- ✓ E-mail: debra.dumesny@globalpower-generation.com.au
ryancornerwindfarm@globalpower-generation.com.au
- ✓ Mail: Ryan Corner Development Pty Ltd
Suite A, Level 3, 73 Northbourne Avenue,
Canberra ACT 2601



**Ryan Corner
Development Pty Ltd**
Phone: 0428 867 646
1800 457 181
E-mail: debra.dumesny@globalpower-generation.com.au
ryancornerwindfarm@globalpower-generation.com.au
Website: <https://ryancornerwindfarm.globalpower-generation.com.au/>
Mail: Ryan Corner Development Pty Ltd, Suite A, Level 3,
73 Northbourne Avenue,
Canberra ACT 2600

Further Information

Do you want to know more?

If you would like to know more about the progress at the wind farm, check the latest updates on the web page or maybe you are a member of a club or group that would like us to visit and explain further about the construction and operation of the wind farm, please contact Debra on 0428 867 646

Employment Opportunities

Please contact our Community and Stakeholder Engagement Officer, Debra Dumesny at debra.dumesny@globalpower-generation.com.au if you are interested in working at Ryan Corner Wind Farm.

Local Accommodation for Construction Workers

As construction commences, short term accommodation will be required for workers. If you have a property that could be used as accommodation for workers, please contact our Community Engagement Officer, Debra Dumesny at debra.dumesny@globalpower-generation.com.au.

Contact Us

Ryan Corner wind farm site office

Please phone, email, or visit us if you have any enquiries. Debra will be at the site office on Monday, Tuesday and Wednesday. The site office generally has someone present on all days. The Hawkesdale office has now closed.



Contact Debra on 0428 867 646 or by email

debra.dumesny@globalpower-generation.com.au

How to be included on the Email List

To be included on the distribution list for our newsletter and updates via email, please contact our Community and Stakeholder Engagement Officer Debra on 0428 867 646 or by email debra.dumesny@globalpower-generation.com.au or ryancornerwindfarm@globalpower-generation.com.au

Ryan Corner Development Pty Ltd

Phone: 0428 867 646
1800 457 181

E-mail:
debra.dumesny@globalpower-generation.com.au
ryancornerwindfarm@globalpower-generation.com.au

Website:
<https://ryancornerwindfarm.globalpower-generation.com.au/>

Mail:
Ryan Corner Development Pty Ltd, Suite A, Level 3,
73 Northbourne Avenue,
Canberra ACT 2600