

## Ryan Corner Wind Farm Community Engagement Committee

Meeting date Monday 20 March 2023  
Meeting time and location 7.30pm at the Port Fairy Yacht Club

### 1. Acknowledgement of Country

Cr Lockett acknowledged the Traditional Custodians of the land on which we meet and paid respect to their Elders past and present.

### 2. Present

Cr Jordan Lockett  
Jacinta Coffey, Community Representative  
Brian Riordan, Community Representative  
Clinton Krause, Community Representative  
Ruth Magnusson, Community Representative  
Camino Cabanillas, GPG Project Manager, Ryan Corner Wind Farm  
Debra Dumesny, GPG Community and Stakeholder Engagement Officer  
Haridian Cabrera, GPG Community Stakeholder Engagement and Local Economic Development (Guest)

Vicki Askew-Thornton, CEC Responsible Officer, Moyne Shire

### 3. Apologies

John Donohue, Community Representative

### 4. Declarations of Interest

Nil.

### 5. Confirmation of Minutes of 17 October 2022 meeting

Moved by Debra Dumesny, seconded by Ruth Magnussen that the minutes of the CEC meeting held on 23 January 2023 be accepted. **CARRIED**

### 6. Business arising from the previous Minutes

- 6.1 Local (Moyne) roads approved for transmission line construction traffic:
- Tarrone North Road
  - Gapes Road
  - Tarrone Lane
  - High Street and Lake Street, Koroit are approved as part of the water truck delivery route.

The TMP specifies Hanson (Warrnambool) as the concrete supplier.

GPG noted that preparation of a TMP for the Hawkesdale section of the transmission line is in progress.

Jacinta has observed and reported instances of trucks not displaying identification stickers/magnets. GPG noted this is an issue it is constantly trying to address, and that where trucks have been identified by their registration number, direct action has been taken including some drivers being laid off for using incorrect routes. Cr Lockett stressed the importance of GPG finding a timely solution to this issue.

## 7. Correspondence Incoming

Dates received	Item/s	Attachment Number
27 and 30 January, 8 and 23 February	From GPG - RCWF weekly construction updates	
14 March	From GPG – RCWF February newsletter	


## 8. Correspondence Outgoing

Nil.

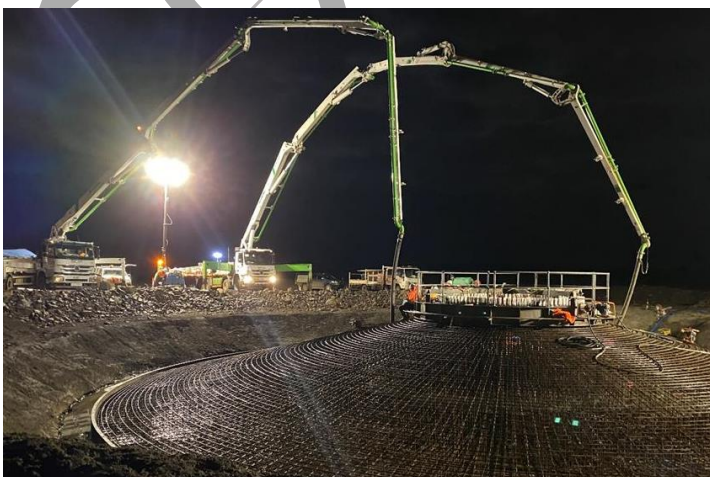
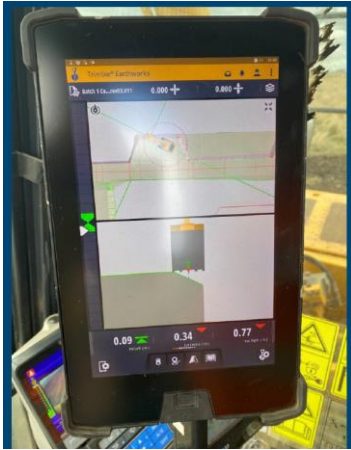
## 9. Reports:

### 9.1 GPG Project Update

## 1. Project Update



- ✓ Vestas team has mobilised to site
- ✓ Excavation has commenced on 34 turbine foundations. 18 foundation pours have been completed
  - Batch 1 has had all access tracks and foundations excavated: 12 of the 17 turbines in batch 1 poured
  - Batch 2 access tracks have commenced;
- ✓ RJE trenching for internal cables have 3 crews excavating and installing cables
- ✓ Final seal for Youls Road is still to be completed from Fingerboard Road to Princes Highway







## Work Hours

- Civil construction earthworks have now commenced to construct the access tracks and hardstands. Generally, the civil contractor will be working:
  - ✓ Monday to Friday      7am to 6pm
  - ✓ Saturday                 7am to 4pm (regular)
  - ✓ Sunday                    7am to 1pm (occasional as required)
- Saturday afternoon (1pm to 4pm) and Sunday works will be restricted to “managed impact” and “low impact” works as defined by the EPA guidelines.
- The purpose of weekend work is to reduce the overall construction duration, and subsequently the duration of impact on the local community.

- There are currently around 150 people working on the site.
- Vestas staff have commenced arriving to the site. Vestas will be responsible for erecting the turbines.
- The turbine erection process will start in May, in ‘Batch 1’ in the northern section of the site.
- The concrete pedestal where the tower is attached is 6.2 metres in diameter.
- Turbine bases/foundations are up to 25 metres in diameter, and require between 450 and 700 cubic metres of concrete depending on the geology and hydrology of a turbine’s location.
- Foundation pours must be completed in one day. Pours have been starting at 5am and finishing mid-afternoon.
- Work such as cable trenching is being done on Sundays. Direct drilling will be used to install the cable under Riverside Road.

## 2. Grid Connection




- Tarrone Terminal Station
  - ✓ Pole laydown area finished
  - ✓ 500kV yard - Foundations completed and structures being assembled
  - ✓ 132kV primary equipment installation in progress
- Transmission line
  - ✓ Construction works for the transmission line access tracks is completed to the collector sub station on RCWF
  - ✓ Poles are being delivered to locations
  - ✓ They have commenced on the northern end of the transmission line to drill and pour foundations
- Ryan Corner collector sub station
  - ✓ Excavation works on the bench are completed
  - ✓ Poured the majority of the foundation for the 132kv side of the collector sub station




- Power from the turbines to the onsite substation will be at 33kV. It will be transformed to 132kV at the onsite substation then travel to the Tarrone substation via the new transmission line. At Tarrone, it will be transformed to 500kV to enter the 500kV transmission line.
- The Tarrone substation transformer is expected to arrive in late April.
- Transmission line pole foundation pours have commenced. There are over 70 poles required.

## 3. Community Engagement



- ✓ February newsletter available.
- ✓ Construction updates are published weekly on the Ryan Comer web site.
- ✓ Quarterly report will appear in the Warrnambool Standard Thursday March 23

### Complaints



- ✓ GPG are providing periodic reports to Moyne Shire Council about the complaints received. Reports to December 31 2022 have been provided.
- ✓ 1 Traffic complaint received since the last meeting:
  - Related to vehicle using roads not approved under the Traffic Management Plan
  - This complaint was directed to us anonymously
  - Conversations continue with the contractors to re-enforce the requirements under the TMP
- ✓ 1 complaint remains open:
  - Damage to property: Acknowledged and investigated immediately. Repairs are in progress.

## Benefit Sharing



- ✓ Neighbour Benefit Program:
  - Contacting neighbours who are eligible for neighbour deeds is continuing, 8 have signed and received their payment.
- ✓ Community Grants Program:
  - \$2,500 per turbine per year = \$130,000 annually
  - A committee to be formed
  - Guidelines to be formulated
  - Geographic area to be defined for eligible applications
  - Types of projects that may be considered for community grants:
    - Long term community plan – contribution over more than one year
    - Individual group/club applications
    - Support of an all communities facility

- GPG is preparing a call for nominations for the Hawkesdale Community Fund Committee via an upcoming mailout to landholders within 10km of the Hawkesdale site, newspaper advertising, information in the school newsletter, emails and communications directly to community groups.

- A similar process is proposed to establish the Ryan Corner Community Benefit Fund Committee. The CEC noted that a mailout should not extend to the Port Fairy township.

- There will be 6 community representatives, 2 GPG representatives and one Council representative (without voting rights).

- In selecting members, GPG will be seeking a broad age range, and a spread of place-of-residence, interests and community background. Members of the CEC will not be eligible to be on the fund committee.

Cr Lockett again noted his view that the community benefit funding should be increased and asked GPG representatives to relay this back to GPG management. GPG responded it is open to further discussion on its community benefit program, and asked Council if had information to compare with other wind farms in Moyne.

GPG noted that providing free power to the community is not possible as it is not a power retailer in Australia.

### 9.2 Community Members:

Ruth will continue to encourage community members to consider nominating for the community benefit fund committee.

Brian asked what work is able to be done on days of Total Fire Ban. GPG responded that foundation pours could occur on TFB days.



### 9.3 Council:

Cr Lockett asked if workers were utilising local accommodation.  
GPG responded that workers are living throughout the Shire and beyond.  
Reports are that wind farm workers are often lined up at the door of the Woolsthorpe General Store waiting for it to open at 6am, and food sales at the Yambuk Store have increased. A mobile coffee van is servicing the Hawkesdale Wind Farm site.

### 10. General business

Nil.

**Next meeting – Monday 15 May 2023, 7.30pm at the Port Fairy Yacht Club**

Confirmed this ..... / ..... / .....

Chair .....

**Minutes are to be registered in Moyne Shire's electronic document management system by the committee reporting officer immediately following the Minutes' confirmation and signing**

CONFIRMED