

---

## Ryan Corner Wind Farm Community Engagement Committee

Meeting date Monday 19 April 2021  
Meeting time and location 7pm at the Port Fairy Community Services Centre

### 1. Welcome and Introductions

### 2. Present

Cr Karen Foster  
Cr Jordan Lockett  
Clinton Krause, Community Representative  
Brian Riordan, Community Representative  
Jacinta Coffey, Community Representative  
Kristi Else, Community Representative  
Debra Dumesny, Global Power Generation (GPG)  
Nathan Micallef, GPG  
Guillermo Alonso Castro, Technical Manager, GPG (Guest)

Vicki Askew-Thornton, CEC Responsible Officer, Moyne Shire

### 3. Apologies

John Donohue, Community Representative  
Ruth Magnusson, Community Representative

### 4. Declarations of Interest

Cr Foster declared a perceived conflict of interest, that she was previously married to a participating landholder, but no longer has a connection to that family.

### 5. Confirmation of Minutes of previous meeting

Moved by Kristi Else, seconded by Debra Dumesny that the minutes of the CEC meeting held on 15 March 2021 be accepted, with an amendment made to include GPGs response to Jacinta Coffey's question of whether the turbines would have aviation lights. **CARRIED**

### 6. Business arising from the previous Minutes

- 5.1 Council will email the CEC more detailed information regarding declaring a conflict of interest. (Completed)
- 5.2 GPG will provide the CEC members with electronic and A3 size colour versions of a new map showing:
  - The final and the superseded turbine locations, identified in different colours.
  - Neighbouring residences.
  - Topography.
  - Road names.

Tabled – **Attachment 1**

GPG agreed to email Council a map extending out to 5km from nearest turbine, which Council will then print and post to the CEC community representatives.

GPG will follow up with Brian Riordan regarding residences that may have been missed on the map.

5.3 GPG will provide more information on its decision for an overhead transmission line to the next CEC meeting. Refer to Section 9.2

5.4 GPG will follow up on a report of project-related vehicles recently using Riverside Road:

GPG emailed the CEC members on 18 March regarding this matter, and those members not on email were telephoned.

GPG explained that Condition 11m of the Permit states that trucks and heavy vehicles are banned from using Riverside Road during construction of the wind farm.

Light vehicles such as those used for survey work are able to use Riverside Road.

5.5 GPG will notify the CEC members once the date, times and venues for the project information sessions are finalised. (Completed)

5.6 GPG tabled the Obstacle Lighting Plan. **Attachment 2**

Summary of discussion:

- The Plan was endorsed by CASA (Civil Aviation Safety Authority).
- The lights will automatically turn on at dusk and turn off at dawn.
- The plan requires the lights to be baffed or shielded so that they cannot be seen from below a turbine.
- The nearest wind farm with operating aviation lighting would be Berrybank Wind Farm.

5.7 Jacinta Coffey no longer wants to have her contact details listed in GPG project newsletters, or on Facebook. Following discussion, it was decided that Council will consider adding a list of the community representatives' names to its website, in the 'Committees of Council' section. Members of the public can then contact Council to ask for a members' email address if they wish to submit questions or have matters raised at a CEC meeting.

GPG's newsletter will direct people to contact Vicki at Council if they wish to make contact with a community representative.

## 7. Correspondence Incoming

- 18 March – Email and telephone calls from GPG with additional information regarding Riverside Road.
- 23 March – Email from GPG with details about its project information sessions and the temporary office in Hawkesdale.

18 April – Email from Jacinta Coffey with letter from Wind Farm Living (circulated to the CEC today) **Attachment 4**

Summary of responses from GPG and Council:

- GPG has no association with Re-Alliance.
- GPG has not provided any money to Re-Alliance.
- GPG does not wish to be involved in the Re-Alliance proposal.
- GPG will administer their own local community fund, targeted towards local projects.
  
- Council does not have an agreement or an association with Re-Alliance.
- Re-Alliance presented at a Council workshop on 30 March 2021.  
The presentation made to Council proposed that wind farm developers in Moyne could contribute some annual funding, separately from their own community benefit funding programs, to be pooled and be put towards worthy strategic and longer term projects that would have a broader Moyne-wide benefit.

Cr Lockett asked if Wind Farm Living is one person, or a Committee of people.

GPG tabled a document outlining its Community Engagement and Benefit Sharing Plan. **Attachment 3**

## 8. Correspondence Outgoing

Nil.

## 9. Reports:

### 9.1 Global Power Generation (GPG):

- Around 35 people attended project information sessions at Port Fairy, and around 12 people attended the Hawkesdale sessions. Project representatives in attendance included GPG, Ausnet, Vestas, Marshall Day, ERM, Envirosafe and the lead contractor, Decmil. Marshall Day had a noise monitor set up and operating at the sessions.
- Debra Dumesny is now based at an office at the Hawkesdale Hall and is generally available there between 9am – 5pm.
- Debra has been visiting neighbours within 2km of the wind farm site. One was missing from the previous RCWF map and has now been contacted.
- GPG has been taking enquiries from individuals and local businesses regarding potential employment and contracting for the construction of the wind farm. Jacinta asked how GPG advertises locally to fill jobs and contracts.

Summary of response:

GPG has developed an expression of interest form, and encourages all its contractors and sub-contractors to engage local employees and businesses where possible. GPG noted it cannot dictate to its contractors how much local content they use.

Council pointed out that it deems 'local' to mean Moyne, and 'regional' to mean Moyne and neighbouring Shires.

- Native vegetation surveys along the transmission line corridor will be undertaken next week.

- A request was made for GPG to email the project newsletters to neighbours.

## 9.2 Community Members:

In response to a question raised by community members at the last meeting, GPG provided the following information on its decision to construct an overhead transmission line.

- The decision to build an overhead line was made in 2006.
- An overhead line is around 5 times more expensive to construct.
- An underground line would have more impact on native vegetation.
- An underground line would require above-ground joint chambers every 3 or 4 kilometres.
- Faults are more easily detected in an overhead line.
- The decision for an overhead line is final.

Brian Riordan noted that GPG had not outlined any advantages of an underground line.

Council pointed out that Acciona had constructed an underground transmission line for its Mortlake South Wind Farm.

Cr Lockett asked why a partial underground line couldn't be considered by GPG, rather than a straight-out 'no' to undergrounding.

Brian asked whether the project would include batteries.

GPG responded that batteries are not currently part of the project, but could be considered in the future.

## 9.3 Council:

Council will post any updated maps to Brian and John.

Council requested that GPG provide a dot-point project update prior to CEC meetings.

## 10. General business

- 10.1** The Committee agreed to alternate the meeting timeslots with the Hawkesdale Wind Farm CEC.

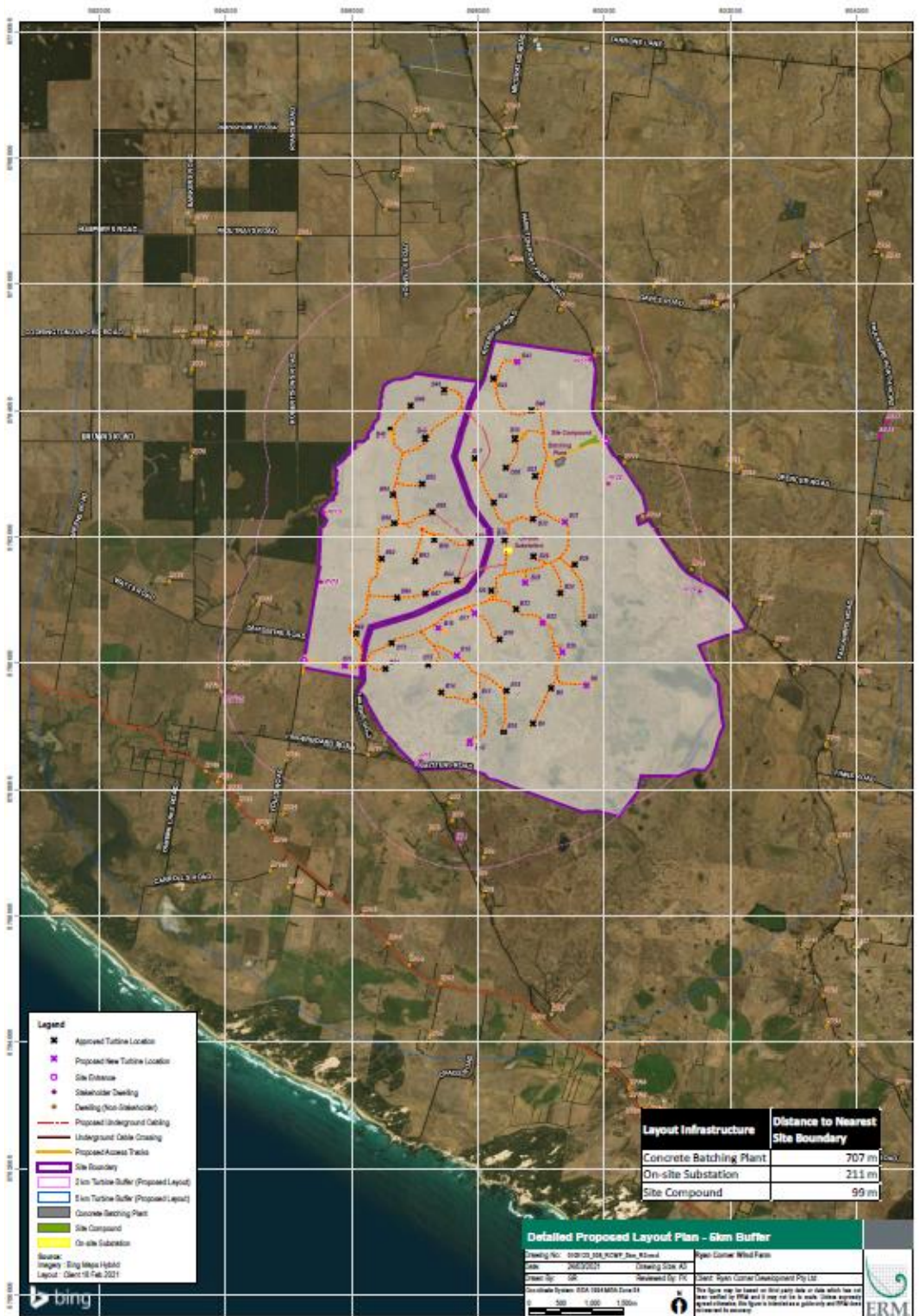
**Next meeting – Monday 17 May 2021 at 5pm, at Port Fairy - venue to be confirmed**

Confirmed this ..... / ..... / .....

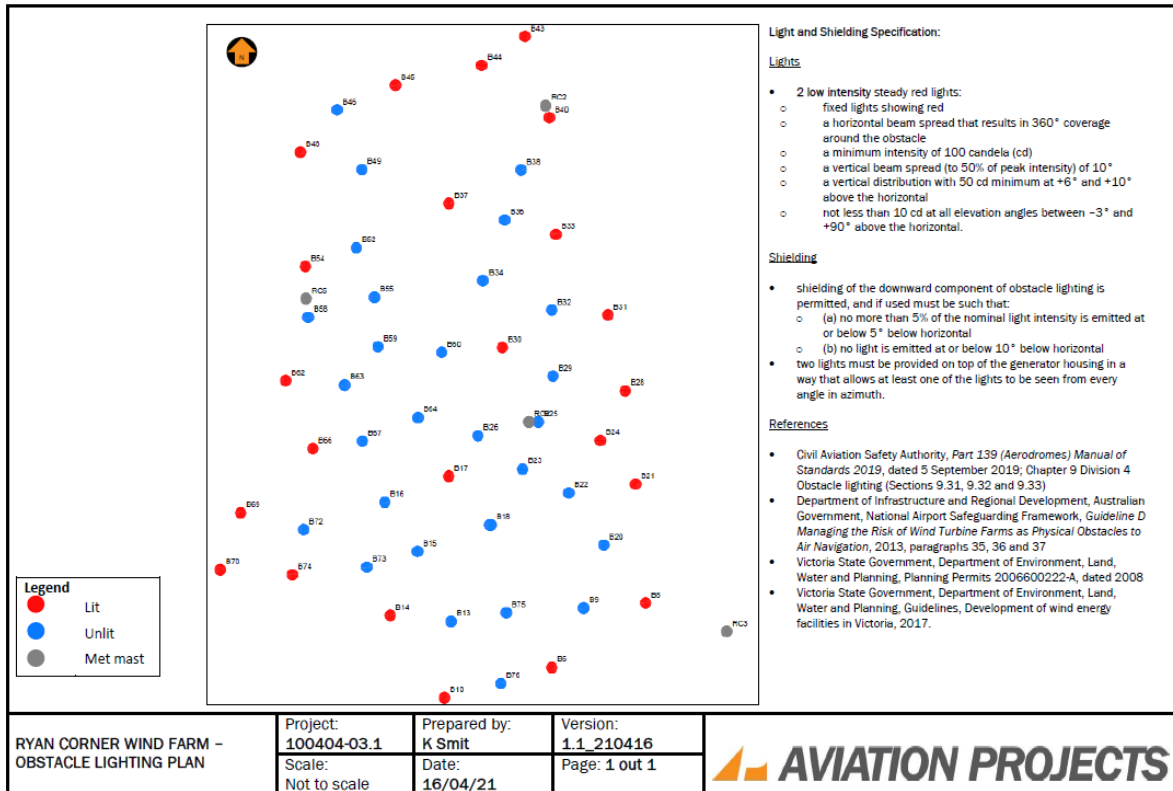
Chair .....

Minutes are to be registered in Moyne Shire's electronic document management system by the committee reporting officer immediately following the Minutes' confirmation and signing

## Attachment 1 – Updated map



## Attachment 2 – Lighting Plan



## Attachment 3

### COMMUNITY ENGAGEMENT & BENEFIT SHARING PLAN

#### Benefit Sharing Programs:

GPG are committed to investing in the local communities surrounding the wind farms through different programs:

- ✓ **Neighbour Benefit Program**  
Construction and Operation Periods

#### Neighbour Deeds:

- Deeds that can be voluntarily entered by those neighbours whose households are within a 1km to 1.5km and 1.5km to 2km radius of any wind turbine in order to compensate them annually for the potential impacts of the project.
- GPG will consult with all neighbouring property owners to offer a Neighbour Deed.
- GPG has identified that there is a potential of 19 in Hawkesdale and 21 in Ryan Corner that are eligible for a Neighbour Deed.

- ✓ **Community Grants Program**  
Operation Period

- GPG to administer Community Grants Program with yearly contributions available via application.
- Total Grants Fund will be determined by \$2,500 per operating turbine per year.
- GPG will set up community committee to set framework and provide recommendations on funding applications.

- ✓ **Other funding to be invested**

- 
- Landscaping Screening Program.
  - Other potential initiatives to be analysed.

## **COMMUNITY ENGAGEMENT & BENEFIT SHARING PLAN**

### **Communication and Information Initiatives:**

- 100% dedicated Community Engagement Officer
- Drop in office (temporary office in Hawkesdale, until permanent offices are available at both sites)
- Community Engagement Committee
- Project Specific Website
- Monthly Community Newsletters
- Weekly Construction Reports
- Media Releases
- Local Print Media Ads
- Information Sessions and Project Presentations
- Participation with Stalls at Community Events
- One-on-one and Key Stakeholders Meetings



## Attachment 4

18<sup>th</sup> April 2021

Wind Farm Living  
Moyne Shire  
Victoria, Australia  
[community@windfarmliving.com](mailto:community@windfarmliving.com)

Dear Community Engagement Committee members,

**RE: Wind Farm Living's request for the complete rejection of the Charity Group Re-Alliance.**

Wind Farm Living is very suspicious of the Moyne Shire's level of association with Re-Alliance. In fact, we believe that the Moyne Shire has met with Re-Alliance before their Council Workshop appearance on the 30<sup>th</sup> of March this year, and that their "alliance" with this group is more sinister than Mayor Meade makes out in his letter of reply (see Ref. 1 attached).

Although Moyne Shire has stated clearly "No more wind farms in Moyne Shire", the motion put by Colin Ryan at the July 2019 Council Meeting (see Ref 2 attached), clearly lists wind farms without permits for inclusion into this slush fund of blood money to be drained from the communities impacted by wind farms.

For Re-Alliance to arrogantly release to the media their "alliance with the Moyne Shire", after it seems, only a brief presentation to the 30<sup>th</sup> of March Council Workshop, smells cray-fish fishy to us. What conversations/meetings/ handshake deals have been done during the time between July 2019 and March 2021, for Re-Alliance to state with confidence their joint relationship with the Moyne Shire?

Wind Farm living has the opinion that Re-Alliance is an opportunistic group of people inserting themselves as money management agents for wind companies. They claim charity status, when they are in the business of charging the companies \$10,000 per turbine for their propaganda services. They claim to promote community engagement, but they campaign against animal husbandry farming, and farmer's use of diesel fuel.

At the recent Hexham CEC meeting, a question was put to the Wind Prospect, "do you support Re-Alliance?" and the answer back was a simple "yes". Yet Moyne Shire did not include this question and answer in the minutes, but instead inserted a propaganda spiel promoting Re-Alliance. (see Ref 3 attached. Hexham CEC April 21 minutes. Item 9.2.1)

Wind farm companies are mistaken if they think they can buy their social license via this devious group. And the Moyne Shire is naïve to believe they can use these out-of-towners as a front to drain blood money from the outlying rural communities for their "politically vote pulling" Port Fairy slush fund.

Wind Farm Living seeks support from the CEC community members to completely reject this unauthorised group, and confirmation from the wind companies and the Moyne Shire, that they will refrain from all involvement with Re-Alliance, to ensure that this discredited organisation takes no further part in our community's affairs.

Wind Farm Living, Moyne Shire  
[community@windfarmliving.com](mailto:community@windfarmliving.com)



Attachments 1 – 3, Scroll Down.