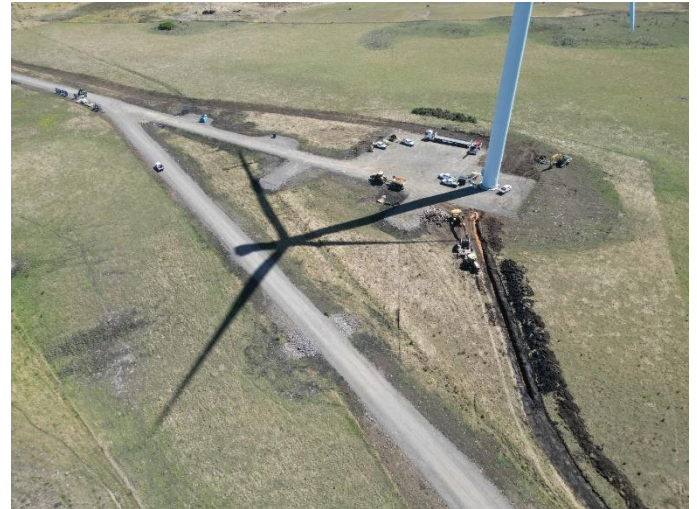


Ryan Corner Wind Farm

Weekly Construction Report January 15 2024

General:

2024 is here and construction is back in full swing. everyone is back on site and ready to move into the final stages of the project.



Turbine erection:

25 towers are now fully erected, 11 are at pre-Install stage. The permanent met masts are being erected. Deliveries of components will begin again for the final turbines on the northeastern section.



Connections:

The underground cabling is progressing quickly in the good weather conditions and is getting close to being completed.

The sub station has been de energised after testing and final works on the connections will be undertaken.