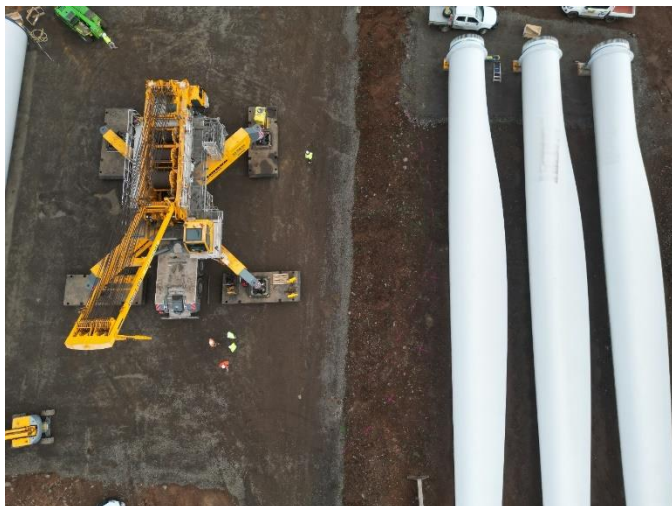


# Ryan Corner Wind Farm

## Weekly Construction Report May 06 2024

### General:

Work is progressing across the site; rehabilitation of the site compound and storage areas is ongoing as each area is demobilised. Final fencing and rehabilitation of farming areas is being conducted in agreement with the individual landowners. The Princes Highway and Youls Road has been completed and inspected by VicRoads.



### Turbine erection:

48 towers are now fully erected, 4 left to be erected. Testing and commissioning of the turbines continues as each collector group is completed.

### Connections:

The substation is very close to completion and energisation is scheduled during the coming weeks. The lights from the sub station will be visible during the testing phase. During full operation of the wind farm the sub station will have safety lighting only unless there is an emergency that requires personnel on site during the night.

